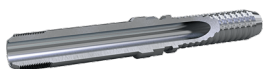




HL - Male MP



Part no.	Descrizione	Pcs/box	ID mm	Filetto	Dimensione tubo	HEX-CH	HEX-CH	WP (psi)	Tubi
HLC841	3/8 M-MP C 3/16 SS	0	3.5	3/8-24 UNF LH	DN5	3/16	0	22500	2041
HLB842	3/8 M-MP B 1/4 SS	0	4	3/8-24 UNF LH	DN6	1/4	0	22500	2022, 2032
HLB142	3/8 M-MP B 1/4	0	4	3/8-24 UNF LH	DN6	1/4	0	22500	2022, 2032
HLC842	3/8 M-MP C 1/4 SS	0	3.5	3/8-24 UNF LH	DN6	1/4	0	22500	2042
HLC1B3	9/16 M-MP C/B 5/16	10	4.5	9/16-18 UNF LH	DN8	5/16	0	22500	2033, 2043
HLC173	3/4 M-MP C/B 5/16	10	4.5	3/4-16 UNF LH	DN8	5/16	0	22500	2033, 2043
HLC873	3/4 M-MP C/B 5/16 SS	10	4.5	3/4-16 UNF LH	DN8	5/16	0	22500	2033, 2043
HLK8B3	9/16 M-MP TO BLAST 5/16 SS	0	5	9/16-18 UNF LH	DN8	5/16	15	22500	2043
HLF873	3/4 M-MP F/E 5/16 SS	10	4.5	3/4-16 UNF LH	DN8	5/16	0	22500	2063, 2363, 2163
HLI873	3/4 M-MP I/H 5/16 SS	10	4.5	3/4-16 UNF LH	DN8	5/16	0	22500	2263
HLK8B4	9/16 M-MP LH TO BLAST 3/8 SS	0	6.5	9/16-18 UNF LH	DN10	3/8	17	22500	2044
HLA8B5	9/16 M-MP A 1/2 SS	10	8.5	9/16-18 UNF LH	DN12	1/2	0	22500	2025
HLG8B5	9/16 M-MP G/D/C/B 1/2 SS	10	7.5	9/16-18 UNF LH	DN12	1/2	0	22500	2245, 2035, 2045, 2055, 2145
HLG875	3/4 M-MP G/D/C/B 1/2 SS	10	7.5	3/4-16 UNF LH	DN12	1/2	0	22500	2245, 2035, 2045, 2055, 2145
HLF8B5	9/16 M-MP F/E 1/2 SS	10	7.5	9/16-18 UNF LH	DN12	1/2	0	22500	2065, 2165
HLF875	3/4 M-MP F/E 1/2 SS	10	7.5	3/4-16 UNF LH	DN12	1/2	0	22500	2065, 2165
HLE887	1 M-MP E/G/C/B/A 3/4 SS	4	13	1-14 UNS LH	DN20	3/4	0	22500	2047, 2057, 2067, 2037
HLE888	1 M-MP E 1 SS	4	17.5	1-14 UNS LH	DN25	1	0	20000	2068

I valori e le dimensioni mostrate possono essere modificati senza preavviso per migliorare le prestazioni e l'affidabilità del prodotto. Transfer Oil S.p.A. non si assume alcuna responsabilità per imprecisioni o errori che appaiono in questa scheda tecnica.

Data documento: 13/04/2026

www.transferoil.com