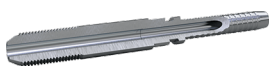




HM - Male HP



Part no.	Descrizione	Pcs/box	ID mm	Filetto	Dimensione tubo	HEX-CH	HEX-CH	WP (psi)	Tubi
HMB820	1/4 M-HP B/A 5/32 SS	10	2.5	1/4-28 UNF LH	DN4	5/32	0	30000	2020, 2030, 2120
HME820	1/4 M-HP E/C 5/32 SS	10	1.8	1/4-28 UNF LH	DN4	5/32	0	58000	2040, 2140, 2060
HMK820	1/4 M-HP TO BLAST 1/8 SS	0	1.8	1/4-28 UNF LH	DN4	5/32	8	31900	2040, 2140
HME840	3/8 M-HP E/C 5/32 SS	10	1.8	3/8-24 UNF LH	DN4	5/32	0	58000	2040, 2140, 2060
HME8B0	9/16 M-HP E/C 5/32 SS	10	1.8	9/16-18 UNF LH	DN4	5/32	0	58000	2040, 2140, 2060
HML821	1/4 M-HP L 3/16 SS	0	2.5	1/4-28 UNF LH	DN5	3/16	0	30000	2341
HMC121	1/4 M-HP C 3/16	10	2.5	1/4-28 UNF LH	DN5	3/16	0	30000	2241, 2041, 2441
HMC821	1/4 M-HP C 3/16 SS	10	2.5	1/4-28 UNF LH	DN5	3/16	0	30000	2241, 2041, 2441
HMC841	3/8 M-HP LH C 3/16 SS	10	2.5	3/8-24 UNF LH	DN5	3/16	0	30000	2241, 2041, 2441
HMC8B1	9/16 M-HP C 3/16 SS	10	2.5	9/16-18 UNF LH	DN5	3/16	0	30000	2241, 2041, 2441
HMK821	1/4 M-HP TO BLAST 3/16 SS	10	2.8	1/4-28 UNF LH	DN5	3/16	10	26100	2041
HMK841	3/8 M-HP TO BLAST 3/16 SS	0	2.8	3/8-24 UNF LH	DN5	3/16	10	26100	2041
HMF821	1/4 M-HP F/E 3/16 SS	10	2.4	1/4-28 UNF LH	DN5	3/16	0	45000	2061, 2161, 2261
HMF841	3/8 M-HP F/E 3/16 SS	10	2.4	3/8-24 UNF LH	DN5	3/16	0	45000	2061, 2161, 2261
HMF8B1	9/16 M-HP F/E 3/16 SS	10	2.4	9/16-18 UNF LH	DN5	3/16	0	45000	2061, 2161, 2261
HMI821	1/4 M-HP I/H 3/16 SS	10	2	1/4-28 UNF LH	DN5	3/16	0	58000	2081
HMI841	3/8 M-HP I/H 3/16 SS	10	2	3/8-24 UNF LH	DN5	3/16	0	58000	2081
HMI8B1	9/16 M-HP I/H 3/16 SS	10	2	9/16-18 UNF LH	DN5	3/16	0	58000	2081
HMB8B2	9/16 M-HP B/A 1/4 SS	10	4	9/16-18 UNF LH	DN6	1/4	0	24000	2022, 2032
HMC842	3/8 M-HP C 1/4 SS	10	3.5	3/8-24 UNF LH	DN6	1/4	0	30000	2042
HMK842	3/8 M-HP TO BLAST 1/4 SS	0	4	3/8-24 UNF LH	DN6	1/4	12	22000	2042
HMF842	3/8 M-HP F 1/4 SS	10	3	3/8-24 UNF LH	DN6	1/4	0	46400	2162
HMF8B2	9/16 M-HP F 1/4 SS	10	3	9/16-18 UNF LH	DN6	1/4	0	46400	2162
HMC8B	9/16 M-HP C/B 5/16 SS	10	4.5	9/16-18	DN8	5/16	0	30000	2033, 2043

3		UNF LH								
HMF843	3/8 M-HP F/E 5/16 SS	10	4.5	3/8-24 UNF LH	DN8	5/16	0	40000	2063, 2363, 2163	
HMF8B3	9/16 M-HP F/E 5/16 SS	10	4.5	9/16-18 UNF LH	DN8	5/16	0	40000	2063, 2363, 2163	
HMI843	3/8 M-HP I/H 5/16 SS	10	4.5	3/8-24 UNF LH	DN8	5/16	0	46400	2263, 2083	
HMI8B3	9/16 M-HP I/H 5/16 SS	10	4.5	9/16-18 UNF LH	DN8	5/16	0	55100	2263, 2083	
HME8B 4	9/16 M-HP E/C 3/8 SS	10	5.5	9/16-18 UNF LH	DN10	3/8	0	40000	2044	
HMC8B 5	9/16 M-HP G/D/C/B 1/2 SS	10	7.5	9/16-18 UNF LH	DN12	1/2	0	22000	2245, 2035, 2045, 2055, 2145	
HMF8B5	9/16 M-HP F/E 1/2 SS	10	7.5	9/16-18 UNF LH	DN12	1/2	0	30000	2065, 2165	
HMI8B5	9/16 M-HP I/H 1/2 SS	10	7.5	9/16-18 UNF LH	DN12	1/2	0	43600	2265, 2085	

*I valori e le dimensioni mostrate possono essere modificati senza preavviso per migliorare le prestazioni e l'affidabilità del prodotto.
Transfer Oil S.p.A. non si assume alcuna responsabilità per imprecisioni o errori che appaiono in questa scheda tecnica.*

*Data documento: 13/04/2026
www.transferoil.com*