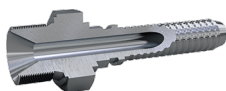




## HP - BSPP Male



| Part no. | Descrizione          | Pcs/box | ID mm | Filetto    | Dimensione tubo | HEX-CH | HEX-CH | WP (psi) | Tubi             |
|----------|----------------------|---------|-------|------------|-----------------|--------|--------|----------|------------------|
| HPB120   | 1/4 M-BSPP B/A 5/32  | 10      | 2.5   | 1/4-19 GAS | DN4             | 5/32   | 14     | 22000    | 2020, 2030, 2120 |
| HPC100   | 1/8 M-BSPP C 5/32    | 10      | 1.8   | 1/8-28 GAS | DN4             | 5/32   | 10     | 31900    | 2040, 2140       |
| HPA101   | 1/8 M-BSPP A 3/16    | 10      | 3     | 1/8-28 GAS | DN5             | 3/16   | 10     | 22001    | 2021, 2121       |
| HPA121   | 1/4 M-BSPP A 3/16    | 10      | 3     | 1/4-19 GAS | DN5             | 3/16   | 14     | 22000    | 2021             |
| HPC821   | 1/4 M-BSPP C 3/16 SS | 10      | 2.5   | 1/4-19 GAS | DN5             | 3/16   | 14     | 26100    | 2241, 2041, 2441 |
| HPC121   | 1/4 M-BSPP C 3/16    | 10      | 2.5   | 1/4-19 GAS | DN5             | 3/16   | 14     | 26100    | 2241, 2041, 2441 |
| HPB102   | 1/8 M-BSPP B/A 1/4   | 10      | 4     | 1/8-28 GAS | DN6             | 1/4    | 10     | 22000    | 2022, 2032       |
| HPB122   | 1/4 M-BSPP B/A 1/4   | 10      | 4     | 1/4-19 GAS | DN6             | 1/4    | 14     | 22000    | 2022, 2032       |
| HPB142   | 3/8 M-BSPP B/A 1/4   | 10      | 4     | 3/8-19 GAS | DN6             | 1/4    | 17     | 22000    | 2022, 2032       |
| HPC122   | 1/4 M-BSPP C 1/4     | 10      | 3.5   | 1/4-19 GAS | DN6             | 1/4    | 14     | 24000    | 2042             |
| HPA123   | 1/4 M-BSPP A 5/16    | 10      | 5.5   | 1/4-19 GAS | DN8             | 5/16   | 14     | 22000    | 2023, 2123       |
| HPA143   | 3/8 M-BSPP A 5/16    | 10      | 5.5   | 3/8-19 GAS | DN8             | 5/16   | 17     | 22000    | 2023, 2123       |
| HPC123   | 1/4 M-BSPP C/B 5/16  | 10      | 4.5   | 1/4-19 GAS | DN8             | 5/16   | 14     | 22000    | 2033, 2043       |
| HPC143   | 3/8 M-BSPP C/B 5/16  | 10      | 4.5   | 3/8-19 GAS | DN8             | 5/16   | 17     | 24000    | 2033, 2043       |
| HPB144   | 3/8 M-BSPP B/A 3/8   | 10      | 6.5   | 3/8-19 GAS | DN10            | 3/8    | 17     | 22000    | 2034, 2024       |
| HPC144   | 3/8 M-BSPP C 3/8     | 10      | 5.5   | 3/8-19 GAS | DN10            | 3/8    | 17     | 22000    | 2044             |

*I valori e le dimensioni mostrate possono essere modificati senza preavviso per migliorare le prestazioni e l'affidabilità del prodotto.  
Transfer Oil S.p.A. non si assume alcuna responsabilità per imprecisioni o errori che appaiono in questa scheda tecnica.*

*Data documento: 13/04/2026*

*www.transferoil.com*