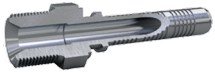




SOD - M-NPT VHP C

VHP NPTF MALE - 700 bar



| Carbon steel Part no | AISI 316L part no | Description | Minimum pack quantity | Hose size | Thread F | | |
|----------------------|-------------------|----------------------|-----------------------|-----------|----------|------|-------|
| SOD101 | | 1/8 M-NPT VHP C 3/16 | 20 | DN5 | 3/16 | 27 | 1/8 " |
| SOD121 | SOD821 | 1/4 M-NPT VHP C 3/16 | 20 | DN5 | 3/16 | 18 | 1/4 " |
| SOD122 | SOD822 | 1/4 M-NPT VHP C 1/4 | 20 | DN6 | 1/4 | 18 | 1/4 " |
| SOD142 | SOD842 | 3/8 M-NPT VHP C 1/4 | 20 | DN6 | 1/4 | 18 | 3/8 " |
| SOD143 | | 3/8 M-NPT VHP C 5/16 | 20 | DN8 | 5/16 | 18 | 3/8 " |
| SOD144 | SOD844 | 3/8 M-NPT VHP C 3/8 | 20 | DN10 | 3/8 | 18 | 3/8 " |
| SOD155 | SOD855 | 1/2 M-NPT VHP C 1/2 | 20 | DN12 | 1/2 | 14 | 1/2 " |
| SOD177 | SOD877 | 3/4 M-NPT VHP C 3/4 | 2 | DN20 | 3/4 | 14 | 3/4 " |
| SOD188 | SOD888 | 1 M-NPT VHP C 1 | 2 | DN25 | 1 | 11,5 | 1 " |

Dimensions and values shown may be changed without prior notice to improve product performances and reliability.

Transfer Oil S.p.A. assumes no liability on mistakes nor errors appearing in this spec sheet.

Document date: 13/04/2026

www.transferoil.com